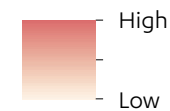
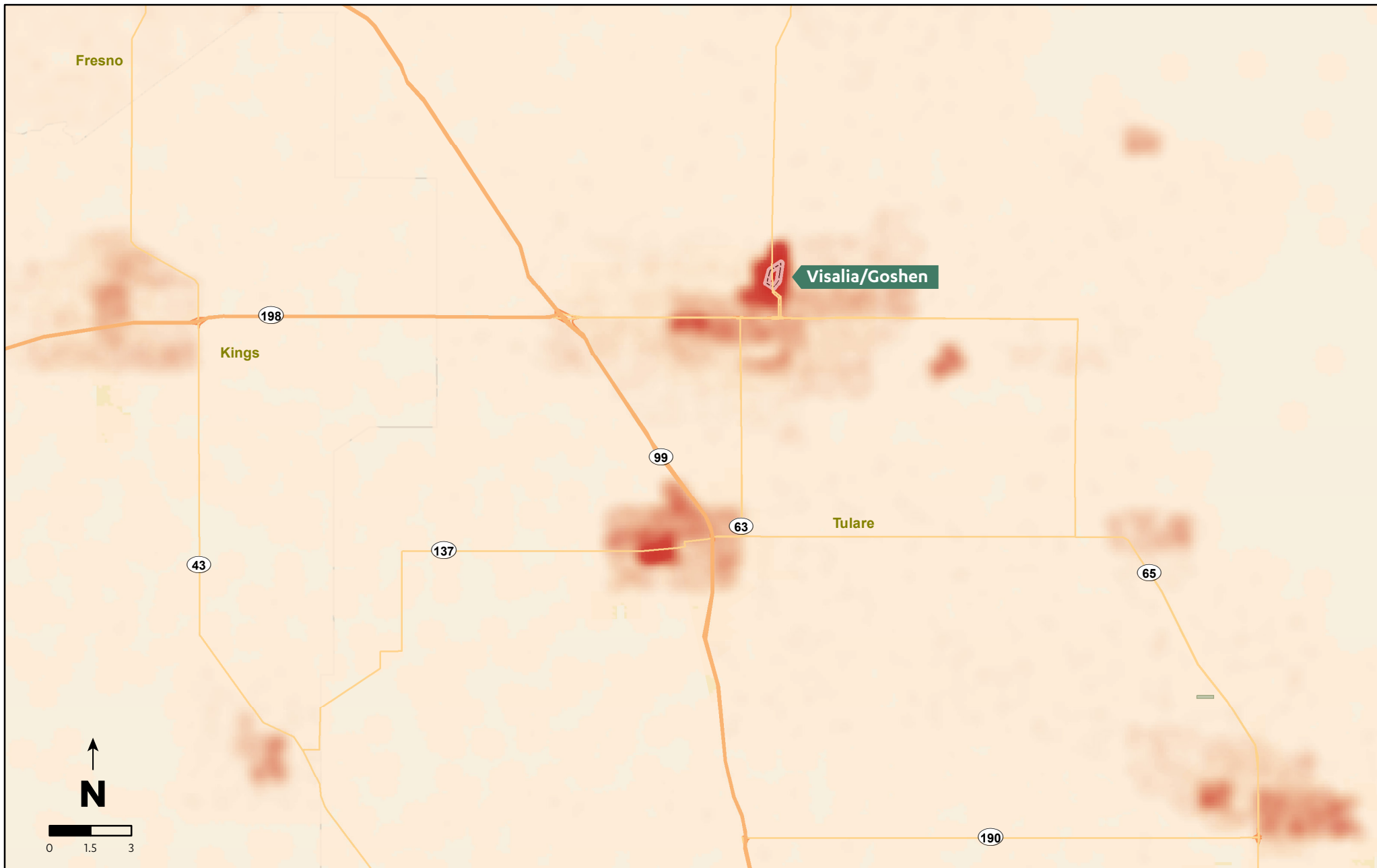


Covered California “Hot Spots” — Bakersfield

This map represents Covered California’s subsidy-eligible target populations. The subsidy-eligible population is calculated by a combination of data from Covered California, CalSIM (UCLA, UC Berkeley) and the American Community Survey (U.S. Census).

Subsidy-Eligible Population

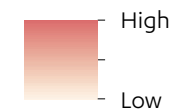


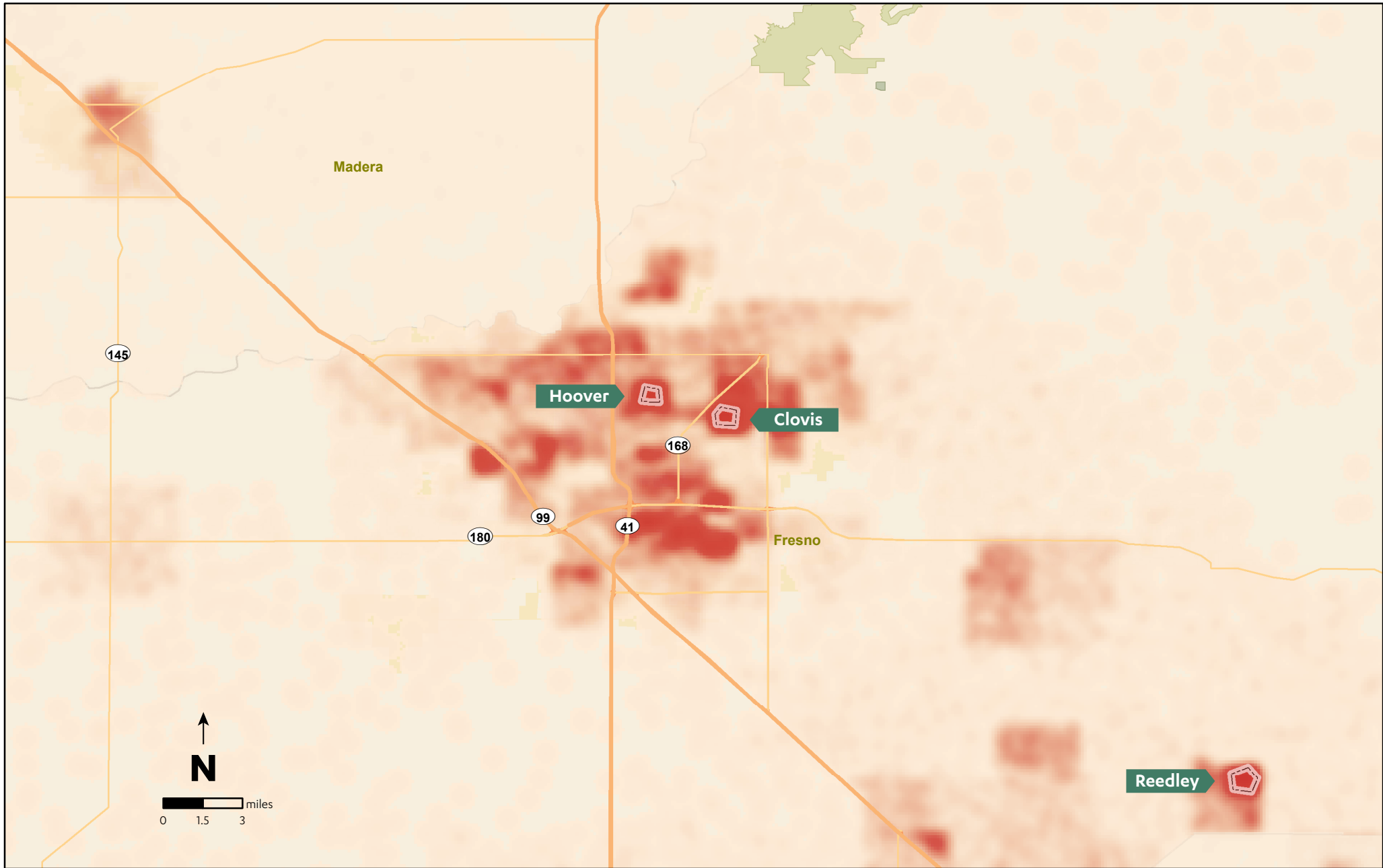


Covered California “Hot Spots” — Visalia

This map represents Covered California’s subsidy-eligible target populations. The subsidy-eligible population is calculated by a combination of data from Covered California, CalSIM (UCLA, UC Berkeley) and the American Community Survey (U.S. Census).

Subsidy-Eligible Population





Covered California “Hot Spots” — Fresno

This map represents Covered California’s subsidy-eligible target populations. The subsidy-eligible population is calculated by a combination of data from Covered California, CalSIM (UCLA, UC Berkeley) and the American Community Survey (U.S. Census).

Subsidy-Eligible Population

